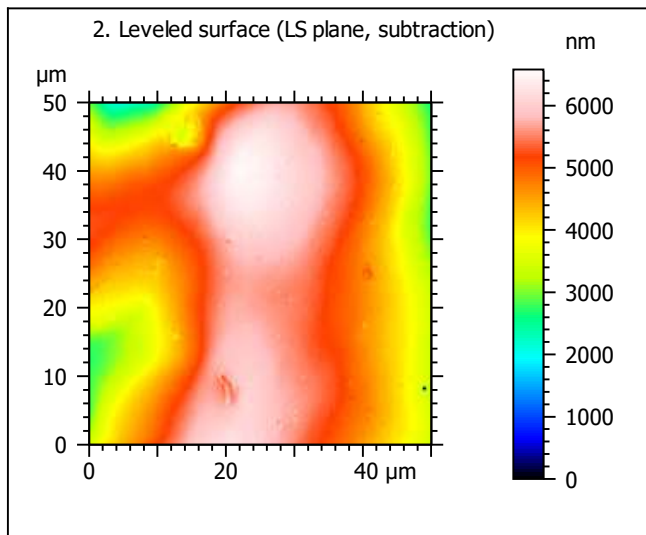
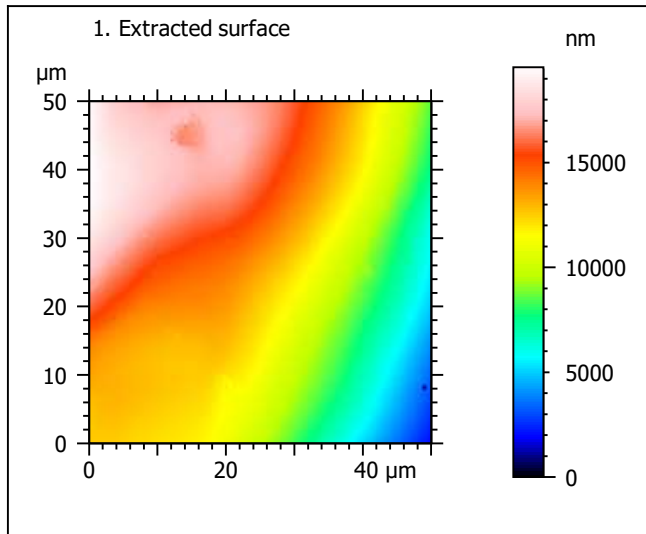
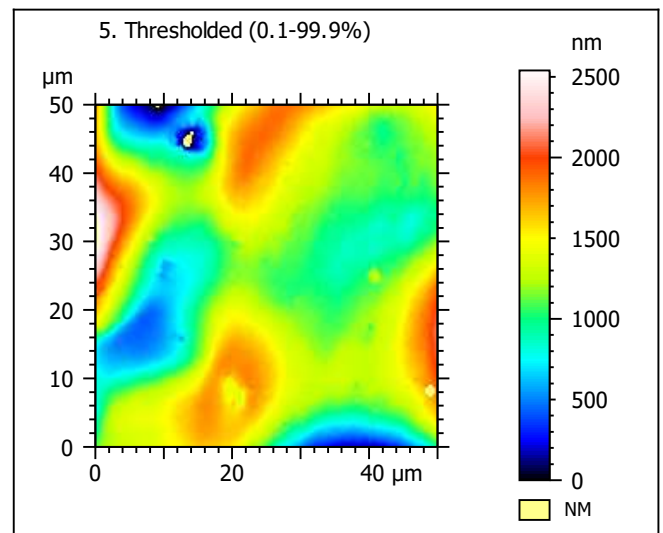
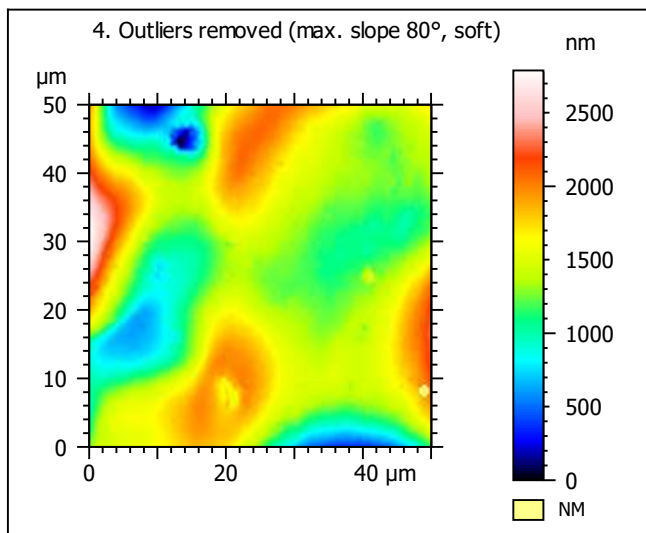
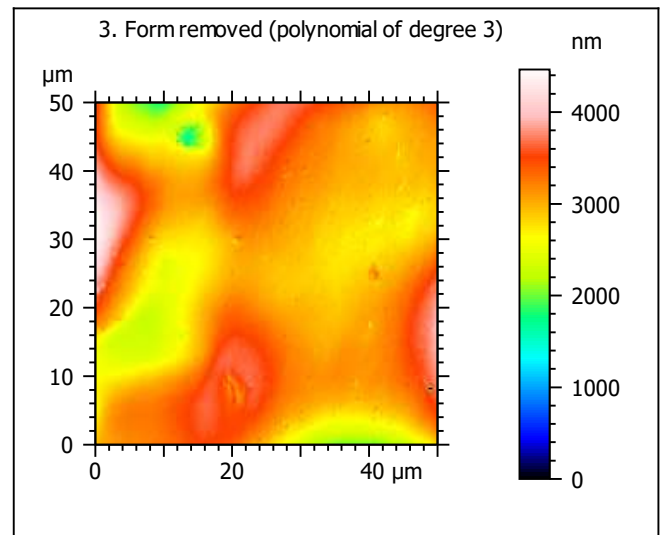


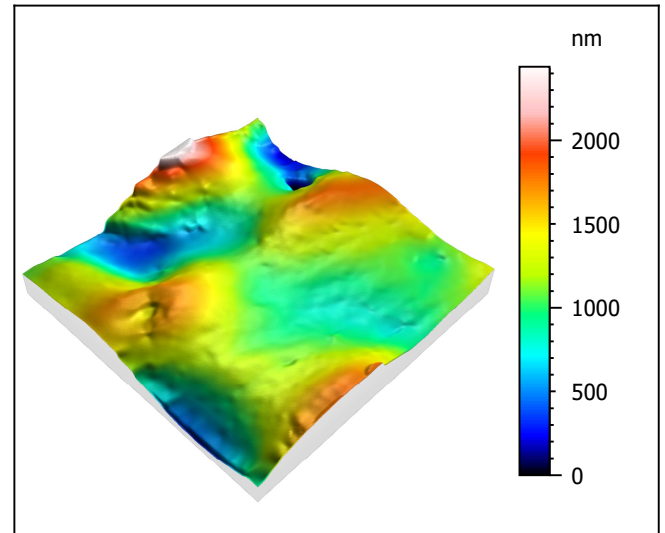
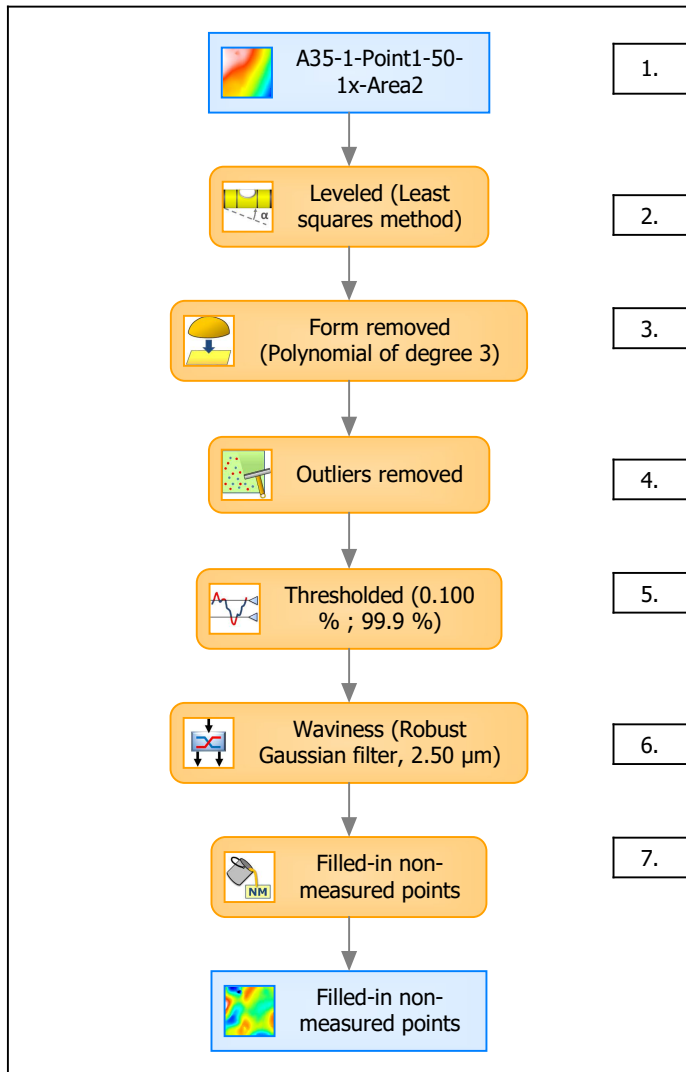
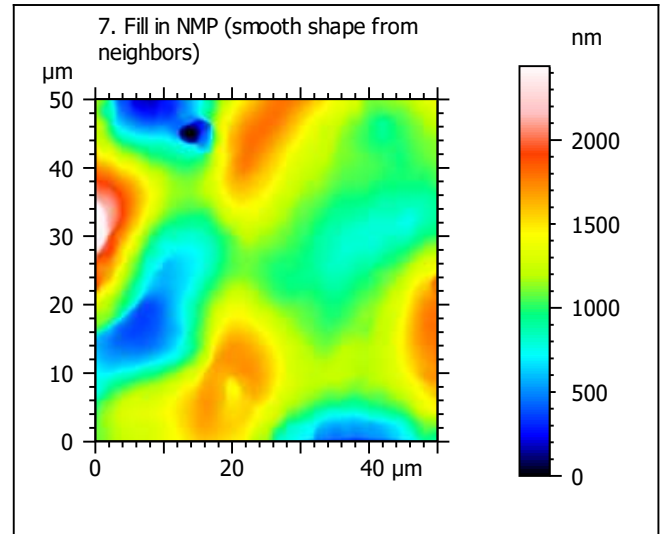
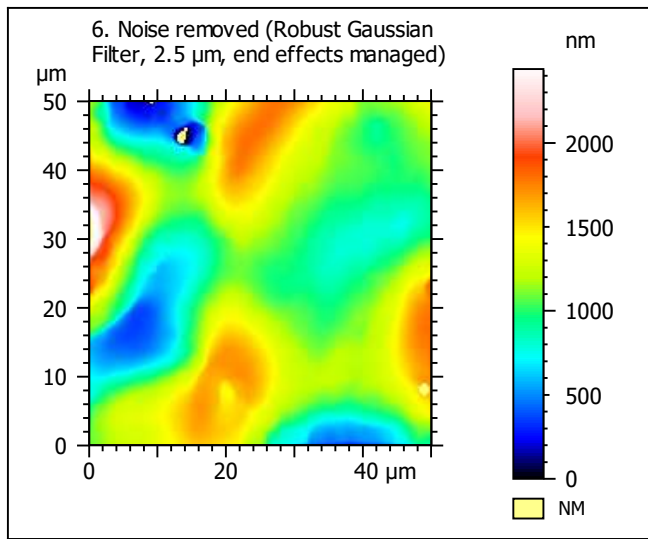
Template to process all extracted 50x50 μm surfaces, acquired with the LEXT 4000 with the 50x/0.95 objective at 1x zoom

A. Processing



Identity card			
Name:	A35-1-Point1-50-1x-Area2		
File path:	D:\Data\Anto\A...\A35-1-Point1-50-1x-Area2.sur		
Axis:	X		
Length:	50.0	μm	
Size:	201	points	
Spacing:	0.250	μm	
Axis:	Y		
Length:	50.0	μm	
Size:	201	points	
Spacing:	0.250	μm	
Axis:	Z		
Length:	19542	nm	
Size:	15684	digits	
Spacing:	1.25	nm	
NMP ratio:	0.00 % (0 Pts)		





Identity card			
Name:	A35-1-Point1-50-1x-Area2 > Levelled (Least s...		
Axis:	X		
Length:	50.0	μm	
Size:	201	points	
Spacing:	0.250	μm	
Axis:	Y		
Length:	50.0	μm	
Size:	201	points	
Spacing:	0.250	μm	
Axis:	Z		
Length:	2440	nm	
Size:	1958	digits	
Spacing:	1.25	nm	
NMP ratio:	0.00 % (0 Pts)		

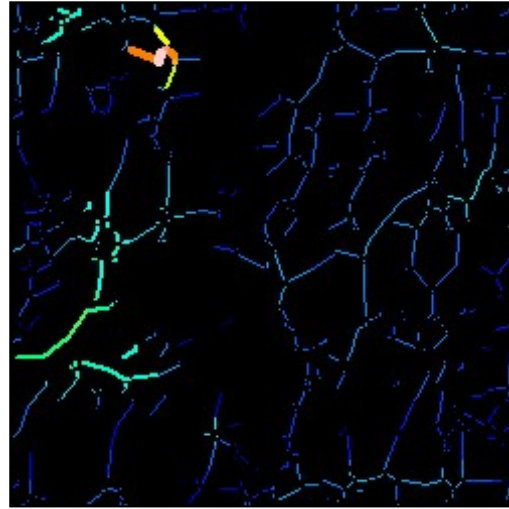
Analyses:
8. ISO 25178
9. Furrow
10. Texture isotropy and direction
11. SSFA

B. Analyses

8. ISO 25178-2 parameters on surface #7

ISO 25178		
Height Parameters		
Sq	359	nm
Ssk	0.0922	
Sku	3.30	
Sp	1297	nm
Sv	1143	nm
Sz	2440	nm
Sa	279	nm
Functional Parameters		
Smr	21.0	%
Smc	489	nm
Sxp	710	nm
Spatial Parameters		
Sal	5.82	μm
Str	0.608	
Std	77.0	°
Hybrid Parameters		
Sdq	0.112	
Sdr	0.601	%
Functional Parameters (Volume)		
Vm	0.0145	$\mu\text{m}^3/\mu\text{m}^2$
Vv	0.504	$\mu\text{m}^3/\mu\text{m}^2$
Vmp	0.0145	$\mu\text{m}^3/\mu\text{m}^2$
Vmc	0.303	$\mu\text{m}^3/\mu\text{m}^2$
Vvc	0.460	$\mu\text{m}^3/\mu\text{m}^2$
Vvv	0.0448	$\mu\text{m}^3/\mu\text{m}^2$

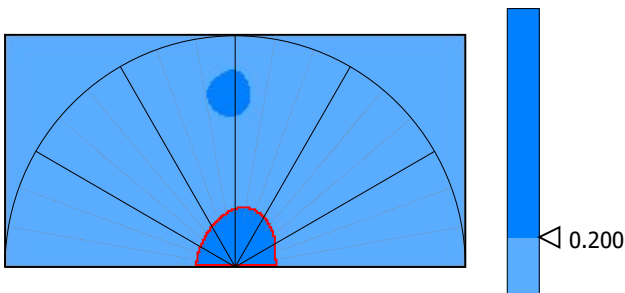
9. Furrow analysis surface #7



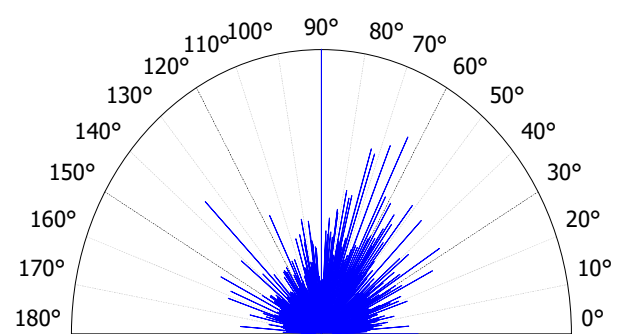
All furrows are shown.

Parameters	Value	Unit
Maximum depth of furrows	817	nm
Mean depth of furrows	164	nm
Mean density of furrows	2081	cm/cm2

10. Texture isotropy and direction on surface #7



Parameters	Value	Unit
Isotropy	65.0	%
Periodicity	25.3	%
Period	18.4	μm
Direction of period	91.8	°



Parameters	Value	Unit
Isotropy	60.8	%
First Direction	90.0	°
Second Direction	63.5	°
Third Direction	73.0	°

